



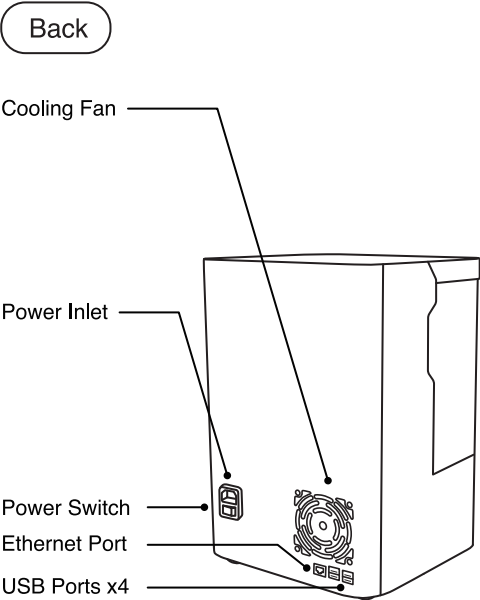
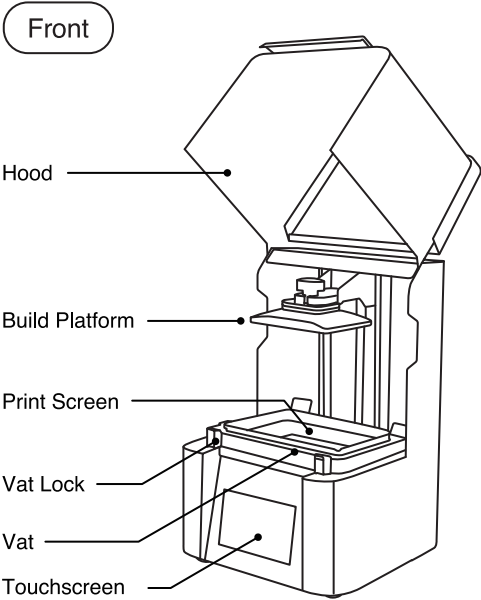
DENTIQ

Quick Start Guide




Register your device
and start its warranty

Product Overview




ALPHA AI Setup

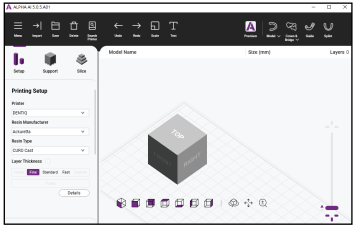


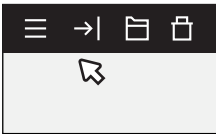
ALPHA AI

Download and install ALPHA AI, our 3D printing slicing software.


[Learn More](#)

 Only compatible with Windows 8 and later versions

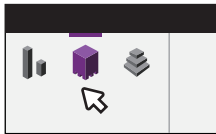




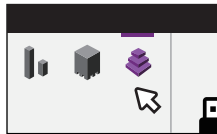
1 Import file (.STL)



2 Set up print



3 Create supports

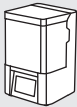


4 Slice and save →
Export print file to a USB




Do not allow any resin or residue to come into contact with the print screen.
If resin is cured on the print screen, the screen will need to be replaced.

Package Contents




DENTIQ
(Build Platform & Vat)


Cable + Tool




Power Cable



Ethernet Cable




Wi-Fi Dongle



Hex Key

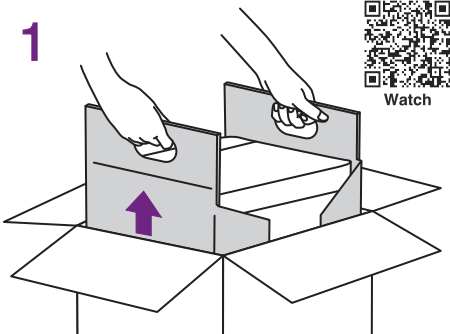
Spare Print Screen



Print Screen x2

Setup Guide

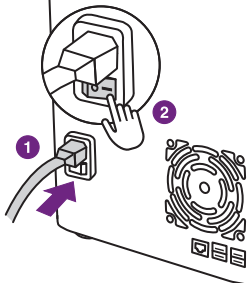
1



⚠ Heavy! Handle with care

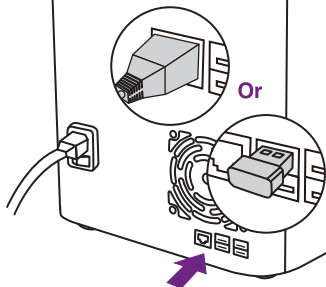
Pull DENTIQ out of the box.

2



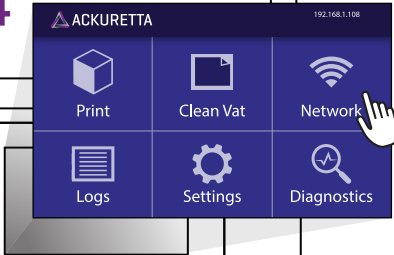
Connect to power source and turn on DENTIQ.

3



Connect to Internet via Wi-Fi or Ethernet cable.

4



Check IP address and ensure your printer is using the same network as your computer.

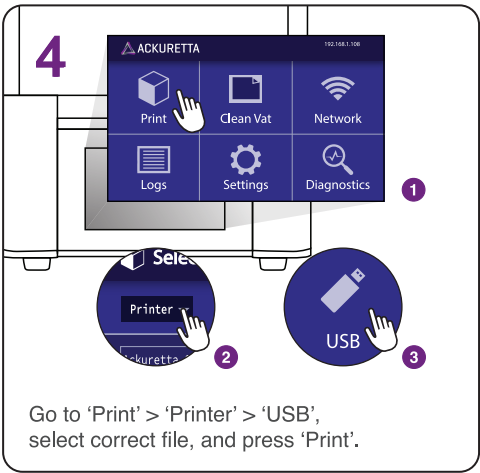
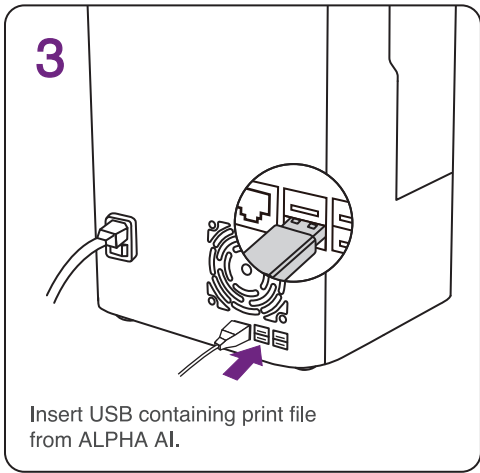
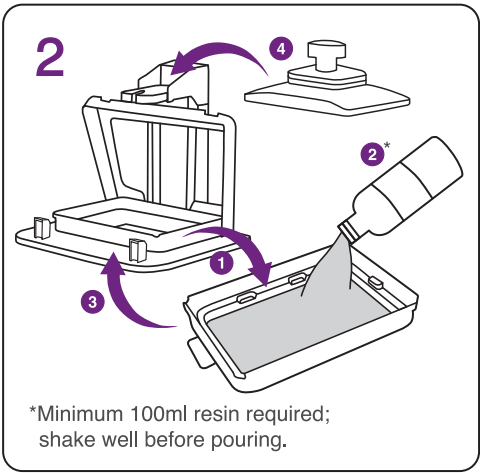
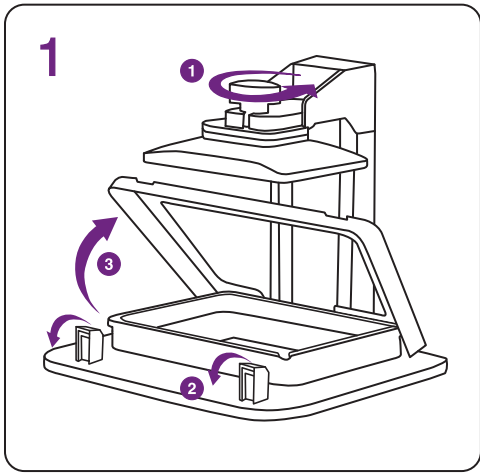


Use UV-filtered lights in your workspace to prevent unintended curing.



Operate DENTIQ in a clean environment that is well ventilated, with a temperature range of 18°-25°C (64°-77°F).

Printing Process



Technical Specifications

Dimensions	25 (W) x 23 (D) x 38 (H) cm 9.8 (W) x 9 (D) x 15 (H) in
Weight	Approx. 10.5 kg Approx. 23.1 lbs
Power Input	100-240VAC, 50-60Hz
UV Wavelength	385-405 nm

Print Area	11.8 (W) x 6.5 (D) x 11 (H) cm 4.6 (W) x 2.6 (D) x 4.3 (H) in
XY Resolution	47 μ m
Layer Thickness	30-150 μ m
3D Print Technology	LCD

