

SOL



SOL is an LCD 3D printer with a monochromatic print screen and is specifically designed for same-day chairside digital dentistry. It prints at three times the speed of SLA printers and has five times more UV Power than earlier models so that it can match DLP Printers. SOL gives light to the full package needed for present-time digital dentistry.



54 LEDs calibrated to be completely uniform



150+ Prevalidated Materials



Selective curing for improved accuracy and lifespan



49-micron Pixel-size




Instant access to resin updates

TECHNICAL SPECIFICATIONS

3D Print Technology	Monochrome LCD Panel
Dimensions	29.2 (W) x 27.1 (D) x 41.6 (H) cm 11.5 (W) x 10.7 (D) x 16.4 (H) in
Weight	Approx. 18 kg Approx. 40 lbs
Print Area	12.9 (W) x 8 (D) x 12 (H) cm 5.1 (W) x 3.1 (D) x 4.7 (H) in
XY Resolution	49 µm
Layer Thickness	30 - 150 µm
UV Wavelength	385 ~ 405 nm
Power Input	100-240VAC, 50-60Hz

PACKAGE INCLUDES

- 1 x SOL 3D Printer
- 1 x ALPHA AI Premium Free Trial Card
- 1 x SOL  Build Platform
- 1 x Power Cable
- 1 x Ethernet Cable
- 1 x Wi-Fi Dongle
- 1 x Hex Key
- 1 x Vat & Vat Box
- 1 x Starter Tool Kit

* Starting June 2024, a heater will be provided with every SOL



sales@ackuretta.com



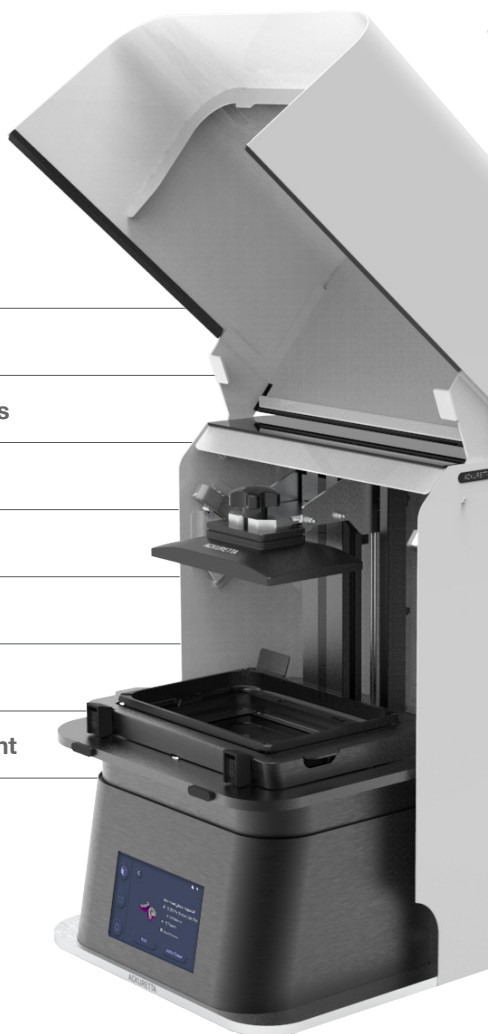
[ackuretta](https://www.ackuretta.com)

ORDER NOW!

SOL

FEATURES

- Modern piano black finish
- Swivel UV-filter hood
- VAT standoffs protect VAT films
- Fallsafe VAT frame
- Ergonomic touchscreen
- 150+ validated resins
- Minimal learning curve
- Simple component replacement
- Designed for chairside and same-day digital dentistry

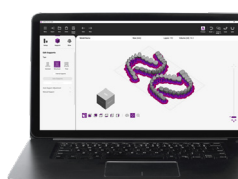


ACKURETTA 3D PRINTING SOLUTION

Dental clinics and labs now have the tools to effortlessly 3D print end-product restorations chairside with increased efficiency, and at a reduced cost. Ackuretta offers a validated all-in-one biocompatible solution that includes hardware, software, finishing solutions, resins, training resources, and documentation that will enable you to complete your prints in a single day.

Proprietary Software

ALPHA AI



3D Printing Resins



LCD 3D Printers



Finishing Kit



APPLICATIONS



Dental Model

- 47 min - 8 per print
- 36 min - 1 per print



Temporary Crown

- 51 min - 28 per print
- 37 min - 12 per print
- 32 min - 3 per print



Splint

- 2h 07 min - 3 per print
- 2h 06 min - 1 per print



Denture Base

- 1h 51 min - 3 per print
- 1h 21 min - 1 per print



Denture Teeth

- 56 min - 3 per print
- 43 min - 1 per print



Surgical Guide

- 53 min - 8 per print
- 41 min - 3 per print



IBT

- 51 min - 3 per print
- 41 min - 1 per print



Castable Crowns

- 1h 25 min - 28 per print
- 49 min - 12 per print
- 49 min - 3 per print



Impression Trays

- 3h 37 min - 4 per print
- 2h 25 min - 1 per print



Gingiva

- 60 min - 9 per print
- 54 min - 4 per print
- 50 min - 1 per print

* The printing times and pieces per print are obtained using the Large Build Platform and the optimal settings for our CURO resin range.



ackuretta.com